



ARUM NB

IMPLANT SYSTEM



Contents

Digital Dentistry Workflow	04	Healing Abutment & Cover Screw	12	Impression Coping Pick up	20	Digital CAD/CAM Product	
Features of Implants	06	How to Use	13	Impression Coping Transfer	21	CAD/CAM Milling Machine	33
Prosthetic Flow Diagrams	08	F1 Plasma	14	Implant Consumables	22	CAM Software	34
NB System		Scan Healing Abutment	16	Drill Sequence	23	Zirconia Block	35
NB I Fixture	09	Cemented Abutment	16	NB Master Kit	24	3D Printer System	36
NB II Fixture	10	Angled Abutment	18	NB Regular Kit	26		
NB Fixture Mini	11	Customized Abutment	19	Drill	27		
		Ti-Base	19	Instruments	29		
				Oral Scanner	32		

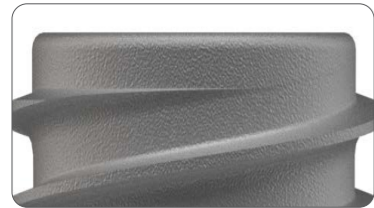


Digital Dentistry Workflow



Features of Implants

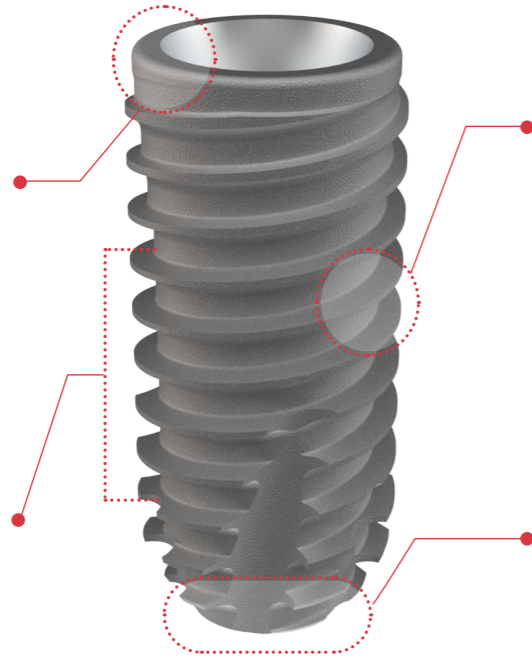
Titanium Gr.4 Cold work material



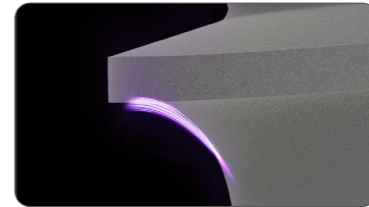
Sturdy support against fracture



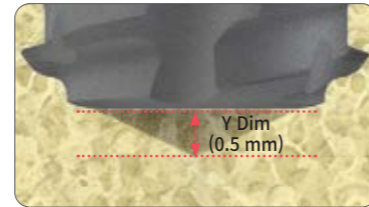
Sufficient Volume and Surface area



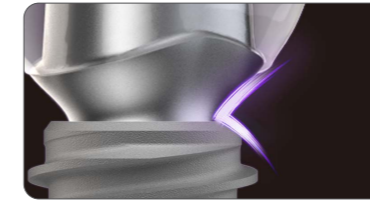
NB I Fixture



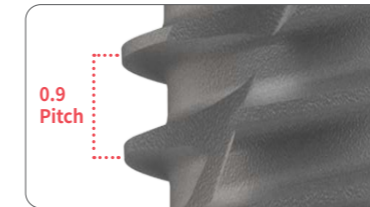
Thread Design to Resist against Lateral Pressure



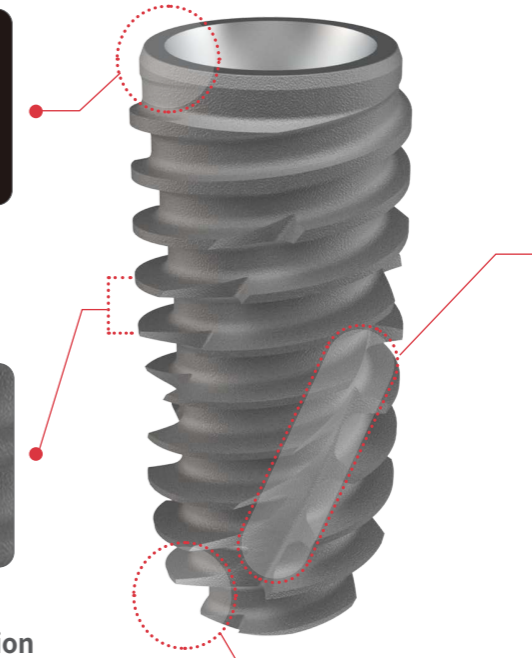
Minimized Tip Extension of the Drill



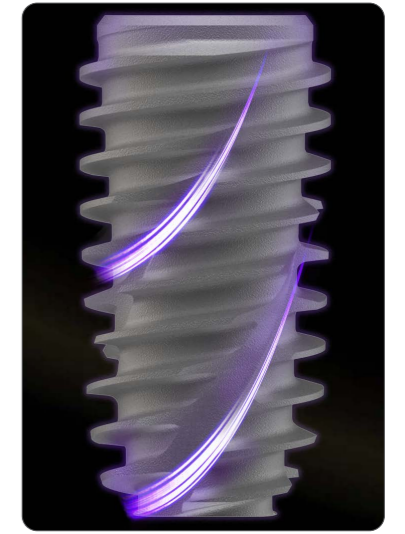
Platform Switching



Thread pitch for Better Stability and Osseointegration



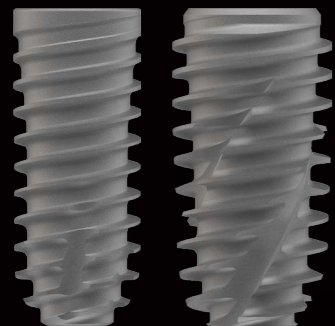
NB II Fixture



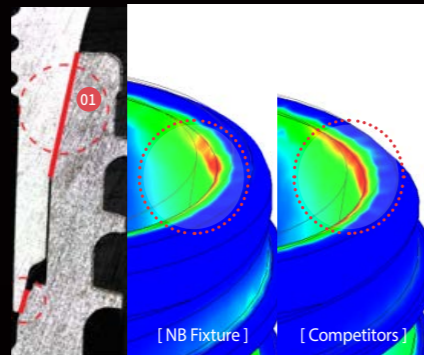
Increasing Self-tapping ability

Excellent initial Fixation

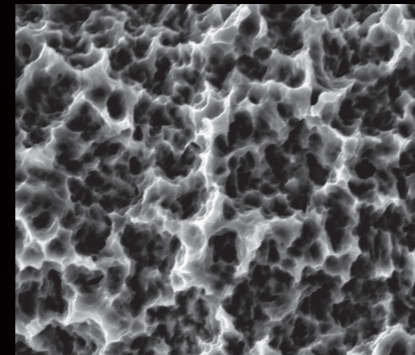
ARUM NB Implants



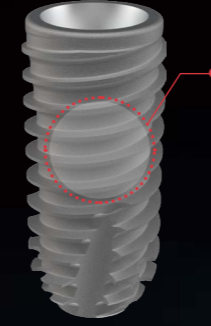
NB Implant Satisfy Various Clinical Needs



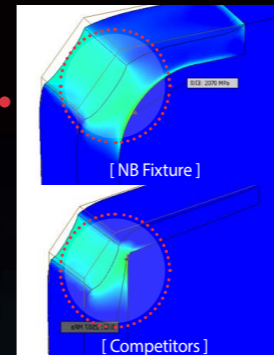
Design for Enhanced Durability



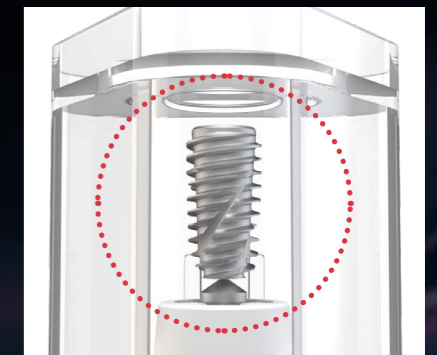
Advanced S.L.A. Surface



Ergonomic Design for Natural Balance

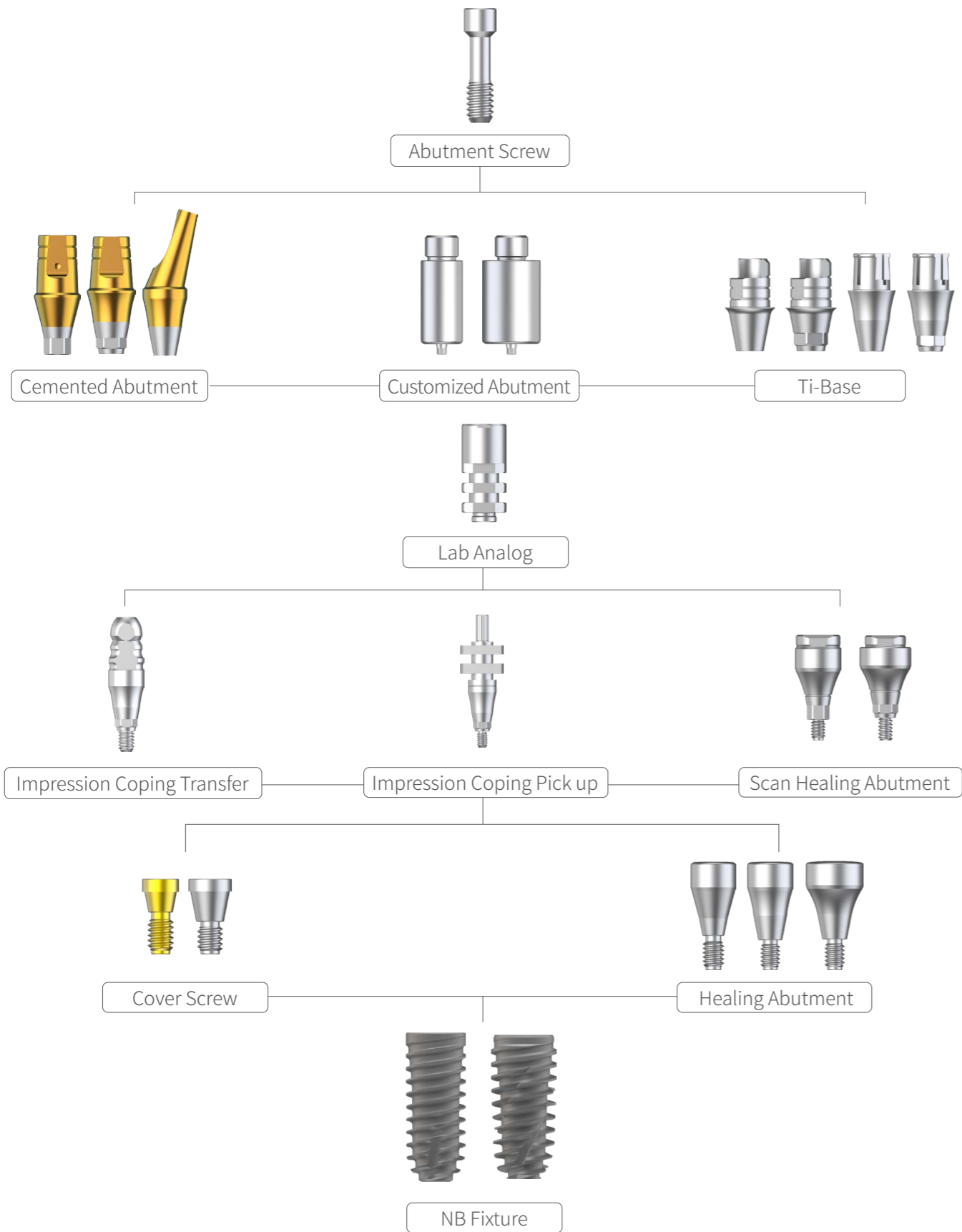


Quality Assurance by Total Inspection



Space Secure Design Prevents Possible Impingement on the Implant Surface

Prosthetic Flow Diagram



NB I Fixture

Size	Image	Code	Diameter Ø	L	Hex
Regular		NB14007SP	4.0	7.0	2.5
		NB14008SP		8.5	
		NB14010SP		10.0	
		NB14011SP		11.5	
		NB14013SP		13.0	
		NB14507SP	4.5	7.0	
		NB14508SP		8.5	
		NB14510SP		10.0	
		NB14511SP		11.5	
		NB14513SP		13	
		NB15007SP	5.0	7.0	
		NB15008SP		8.5	
		NB15010SP		10.0	
		NB15011SP		11.5	
		NB15013SP		13.0	
	NB15507SP	5.5	7.0		
	NB15508SP		8.5		
	NB15510SP		10.0		
	NB15511SP		11.5		
	NB15513SP		13.0		
Wide		NB16007SP	6.0	7.0	2.5
		NB16008SP		8.5	
		NB16010SP		10.0	
		NB16011SP		11.5	
		NB16013SP		13.0	
		NB16507SP	6.5	7.0	
		NB16508SP		8.5	
		NB16510SP		10.0	
		NB16511SP		11.5	
		NB16513SP		13.0	



* Set (Fixture + Cover Screw) Order Code : Fixture product code + SS (ex. NB16007SS)
 * Please contact us for Diameter Ø 3.6 size

NB II Fixture



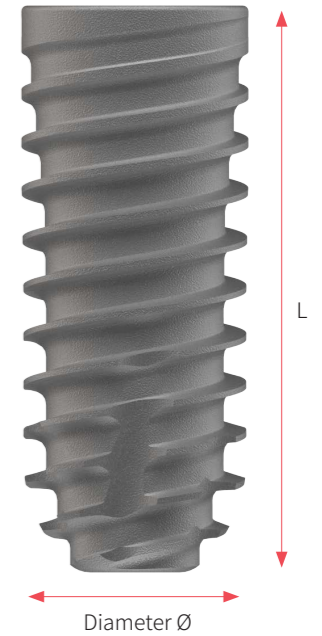
Size	Image	Code	Diameter Ø	L	Hex
Regular		NB24007SP	4.0	7.0	2.5
		NB24008SP		8.5	
		NB24010SP		10.0	
		NB24011SP		11.5	
		NB24013SP		13.0	
		NB24507SP	4.5	7.0	
		NB24508SP		8.5	
		NB24510SP		10.0	
		NB24511SP		11.5	
		NB24513SP		13.0	
		NB25007SP	5.0	7.0	
		NB25008SP		8.5	
		NB25010SP		10.0	
		NB25011SP		11.5	
		NB25013SP		13.0	
	NB25507SP	5.5	7.0		
	NB25508SP		8.5		
	NB25510SP		10.0		
	NB25511SP		11.5		
	NB25513SP		13.0		
Wide		NB26007SP	6.0	7.0	2.5
		NB26008SP		8.5	
		NB26010SP		10.0	
		NB26011SP		11.5	
		NB26013SP	6.5	13.0	
		NB26507SP		7.0	
		NB26508SP		8.5	
		NB26510SP		10.0	
		NB26511SP		11.5	
		NB26513SP		13.0	

* Set (Fixture + Cover Screw) Order Code : Fixture product code + SS (ex. NB16007SS)

NB Fixture Mini

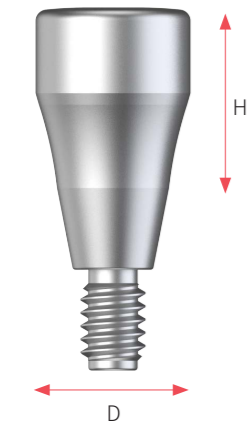
Size	Image	Code	Diameter Ø	L	Hex
Mini		NB3208SP	3.2	8.5	2.1
		NB3210SP		10.0	
		NB3211SP		11.5	
		NB3213SP		13.0	
		NB3508SP		3.5	
	NB3510SP	10.0			
	NB3511SP	11.5			
	NB3513SP	13.0			

* Set (Fixture + Cover Screw) Order Code : Fixture product code + SS (ex. NB16007SS)



Healing Abutment & Cover Screw

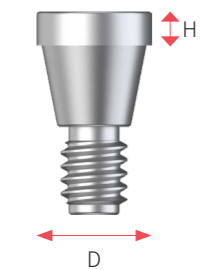
How To Use



[Healing Abutment]

Size	Image	Code	D	H				
Mini		HA4003M	4.0	3.0				
		HA4004M		4.0				
		HA4005M		5.0				
		HA4006M		6.0				
		HA4007M		7.0				
		HA4008M		8.0				
		HA4009M	9.0					
		Regular		HA4503M	4.5	3.0		
				HA4504M		4.0		
				HA4505M		5.0		
				HA4506M		6.0		
				HA4507M		7.0		
HA4508M	8.0							
HA4509M	9.0							
Regular				HA4503R	4.5	3.0		
				HA4504R		4.0		
				HA4505R		5.0		
				HA4506R		6.0		
				HA4507R		7.0		
		HA4508R	8.0					
		HA4509R	9.0					
		Regular		HA5503R	5.5	3.0		
				HA5504R		4.0		
				HA5505R		5.0		
				HA5506R	6.0			
				HA5507R	7.0			
				HA5508R	8.0			
				HA5509R	9.0			
				Regular		HA6503R	6.5	3.0
						HA6504R		4.0
		HA6505R	5.0					
		HA6506R	6.0					
HA6507R	7.0							
HA6508R	8.0							
HA6509R	9.0							
Size	Image	Code	D			H		
Mini		CS2800M	2.8			0.3		
		CS2801M		1.0				
		CS2802M		2.0				
		CS2803M		3.0				
Regular		CS3400R	3.4	0.3				
		CS3401R		1.0				
		CS3402R		2.0				
		CS3403R		3.0				

* Use a 1.27 Hex driver.
* Regular is Compatible with Wide



[Cover Screw]

Fixture



Fixture Cover Screw



F1 Plasma

High Bioactivity & Super Hydrophilicity

- 01 Activating 2ea simultaneously within 50 seconds
- 02 0 degree implant surface contact angle for realizing Superhydrophilicity
- 03 Early loading of osteoblasts and albumin due to fast blood wetting
- 04 Prevention of contamination and infection when opened by using the ampoule as it is
- 05 50% reduction in osteoclast and initial bone absorption activity compared to general S.L.A
- 06 No thermal damage due to low-temperature treatment



High Compatibility



[Fixture]



[GBR]

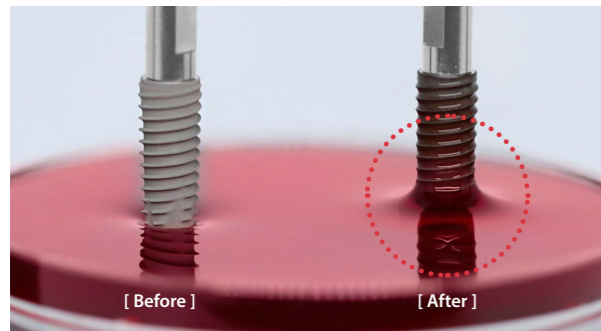
Most Implant Brands

- Without additional device
- Without damaging on the surface treatment

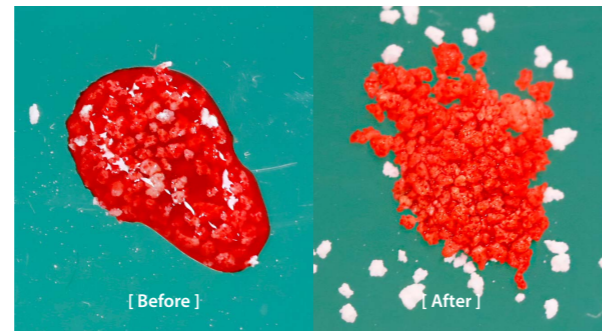
Most GBR Products

- Improve blood wettability of xenograft and synthetic
- Easy operation using Bone Activating Module

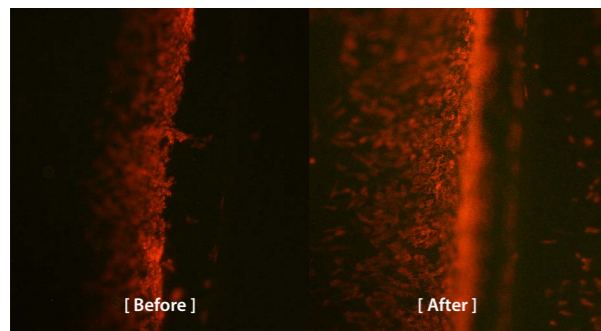
F1 Plasma Performance



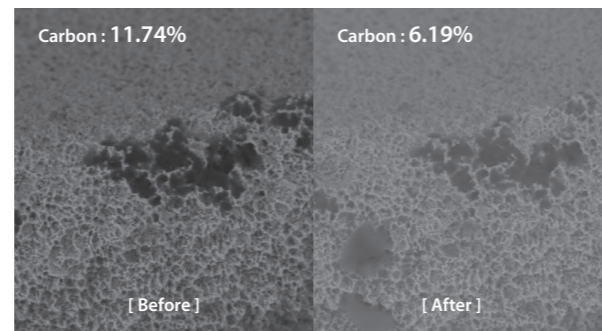
[Fixture Hydrophilicity]



[GBR Hydrophilicity]

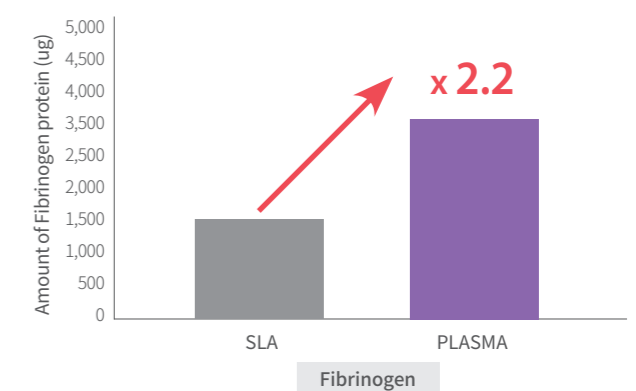
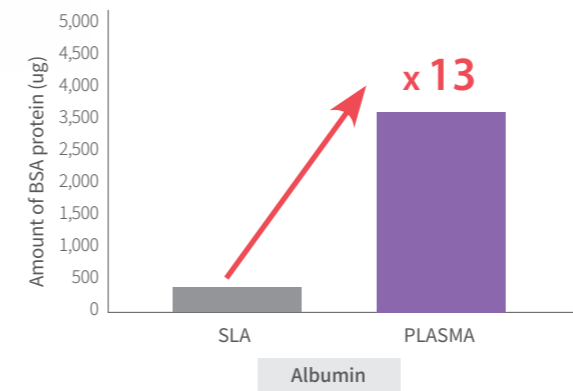


[Osteoblast Adhesion]



[Removal of Carbon Compounds]

Protein Adsorption Test



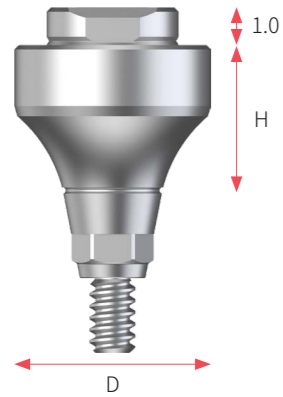
Specifications

Size	W247 x H275 x D247 (mm)
Display	4.3" Full Touch LCD Display
Irradiation time	50 ± 15 / 100 ± 30 (Seconds)
Power consumption	170 W
Power supply	AC 220 V / 50~60 Hz
Weight	8 Kg

F1 Plasma Vs. Competitors

Compare	ARUM	Competitors			
	Plasma F1 Plasma	Plasma M	Plasma N	UV P	UV D
Use compatibility for operators	⊙	×	○	×	×
Sterilization process	⊙	⊙	×	×	×
Low-temperature treatment	⊙	⊙	○	×	×
Aseptic storage	⊙	⊙	△	×	×
Economics	⊙	×	△	△	×
Equipment rental	⊙	⊙	×	○	○

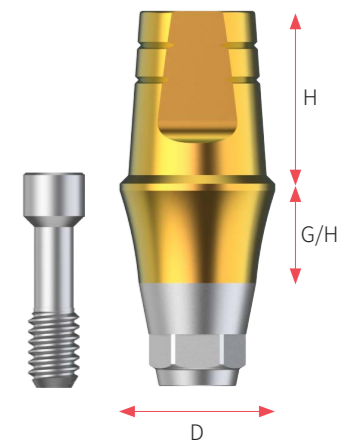
Scan Healing Abutment



Size	Image	Code	D	H
Mini		HAS4503M	4.5	3.0
		HAS4505M		5.0
		HAS4507M		7.0
		HAS4509M		9.0
Regular		HAS4503R	4.5	3.0
		HAS4505R		5.0
		HAS4507R		7.0
		HAS4509R		9.0
		HAS5503R	5.5	3.0
		HAS5505R		5.0
		HAS5507R		7.0
		HAS5509R		9.0
		HAS6503R	6.5	3.0
		HAS6505R		5.0
		HAS6507R		7.0
		HAS6509R		9.0

* Use a 1.27 Hex driver.
* Regular is Compatible with Wide.

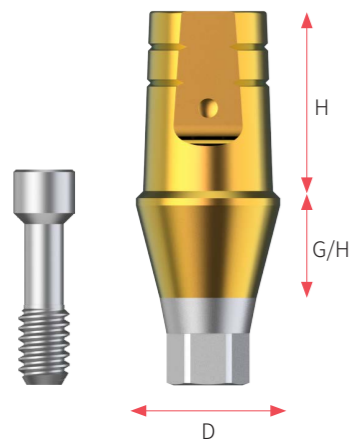
Cemented Abutment



Size	Code [Hex]	Code [Non-Hex]	D	G/H	H
Regular	SACH4515R	SACN4515R	4.5	1.0	5.0
	SACH4525R	SACN4525R		2.0	
	SACH4535R	SACN4535R		3.0	
	SACH4545R	SACN4545R		4.0	
	SACH4555R	SACN4555R		5.0	
	SACH4565R	SACN4565R		6.0	
	SACH4517R	SACN4517R	4.5	1.0	7.0
	SACH4527R	SACN4527R		2.0	
	SACH4537R	SACN4537R		3.0	
	SACH4547R	SACN4547R		4.0	
	SACH4557R	SACN4557R		5.0	
	SACH4567R	SACN4567R		6.0	
	SACH5515R	SACN5515R	5.5	1.0	5.0
	SACH5525R	SACN5525R		2.0	
	SACH5535R	SACN5535R		3.0	
	SACH5545R	SACN5545R		4.0	
	SACH5555R	SACN5555R		5.0	
	SACH5565R	SACN5565R		6.0	
	SACH5517R	SACN5517R	5.5	1.0	7.0
	SACH5527R	SACN5527R		2.0	
	SACH5537R	SACN5537R		3.0	
	SACH5547R	SACN5547R		4.0	
	SACH5557R	SACN5557R		5.0	
	SACH5567R	SACN5567R		6.0	
	SACH6515R	SACN6515R	6.5	1.0	5.0
	SACH6525R	SACN6525R		2.0	
	SACH6535R	SACN6535R		3.0	
	SACH6545R	SACN6545R		4.0	
	SACH6555R	SACN6555R		5.0	
	SACH6565R	SACN6565R		6.0	
	SACH6517R	SACN6517R	6.5	1.0	7.0
	SACH6527R	SACN6527R		2.0	
SACH6537R	SACN6537R	3.0			
SACH6547R	SACN6547R	4.0			
SACH6557R	SACN6557R	5.0			
SACH6567R	SACN6567R	6.0			

* Use a 1.27 Hex driver.
* Regular is Compatible with Wide.

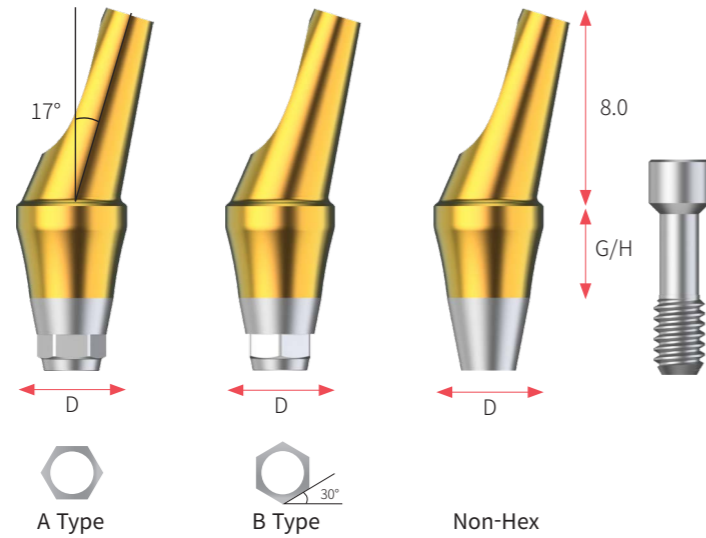
Cemented Abutment



Size	Code [Hex]	Code [Non-Hex]	D	G/H	H
Mini	SACH4015M	SACN4015M	4.0	1.0	5.0
	SACH4025M	SACN4025M		2.0	
	SACH4035M	SACN4035M		3.0	
	SACH4045M	SACN4045M		4.0	
	SACH4055M	SACN4055M		5.0	
	SACH4515M	SACN4515M		4.5	
	SACH4525M	SACN4525M	2.0		
	SACH4535M	SACN4535M	3.0		
	SACH4545M	SACN4545M	4.0		
	SACH4555M	SACN4555M	5.0		

* Use a 1.27 Hex driver.

Angled Abutment



Size	D	G/H	Code [A]	Code [B]	Code [Non-Hex]
Mini	4.0	2	SAAH402AM	SAAH402BM	SAAN402M
		4	SAAH404AM	SAAH404BM	SAAN404M
	4.5	2	SAAH452AM	SAAH452BM	SAAN452M
		4	SAAH454AM	SAAH454BM	SAAN454M
Regular	4.5	2	SAAH452AR	SAAH452BR	SAAN452R
		4	SAAH454AR	SAAH454BR	SAAN454R
	5.5	2	SAAH552AR	SAAH552BR	SAAN552R
		4	SAAH554AR	SAAH554BR	SAAN554R

* Use a 1.27 Hex driver.
* Regular is Compatible with Wide.

Customized Abutment

Size	Image	Code	Code [Non-Hex]	D
Mini		CAH10M	CAN10M	10.0
		CAH14M	CAN14M	14.0
Regular		CAH10R	CAN10R	10.0
		CAH14R	CAN14R	14.0

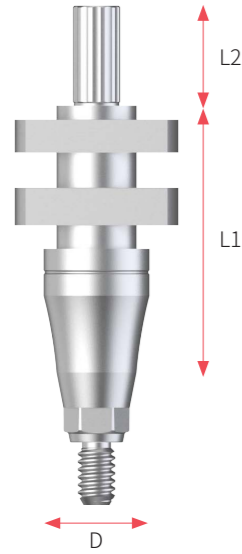
* Use a 1.27 Hex driver.
* Regular is Compatible with Wide.

Ti-Base

Size	Image	Code	Code [Non-Hex]	D	H
Mini		LAH4014M	LAN4014M	3.7	4.0
Regular		LAH4014R	LAN4014R	4.1	4.0

* Use a 1.27 Hex driver.
* Regular is Compatible with Wide.

Impression Coping Pick up



[ICPH4515R + ICP-S26TR]

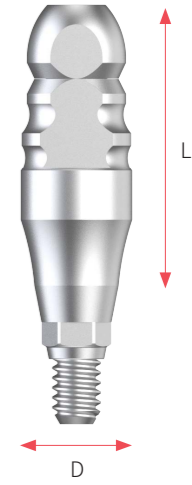
Size	Code [Hex]	Code [Non-Hex]	D	L1	L2		
Mini	ICPH4009M21	ICPN4009M21	4.0	9.5	5.0		
	ICPH4009M23	ICPN4009M23			7.0		
	ICPH4011M23	ICPN4011M23		11.5	5.0		
	ICPH4011M27	ICPN4011M27			9.0		
	ICPH4015M27	ICPN4015M27		15.5	5.0		
	ICPH4015M31	ICPN4015M31			9.0		
	Regular	ICPH4509M21	ICPN4509M21	4.5	9.5	5.0	
		ICPH4509M23	ICPN4509M23			7.0	
		ICPH4511M23	ICPN4511M23		11.5	5.0	
		ICPH4511M27	ICPN4511M27			9.0	
		ICPH4515M27	ICPN4515M27		15.5	5.0	
		ICPH4515M31	ICPN4515M31			9.0	
Regular		ICPH4509R20	ICPN4509R20	4.5	9.5	5.0	
		ICPH4509R22	ICPN4509R22			7.0	
		ICPH4511R22	ICPN4511R22		11.5	5.0	
		ICPH4511R26	ICPN4511R26			9.0	
		ICPH4515R26	ICPN4515R26		15.5	5.0	
		ICPH4515R30	ICPN4515R30			9.0	
	Regular	ICPH5509R20	ICPN5509R20	5.5	9.5	5.0	
		ICPH5509R22	ICPN5509R22			7.0	
		ICPH5511R22	ICPN5511R22		11.5	5.0	
		ICPH5511R26	ICPN5511R26	9.0			
		Regular	ICPH5515R26	ICPN5515R26	6.5	15.5	5.0
			ICPH5515R30	ICPN5515R30			9.0
	ICPH6509R20		ICPN6509R20	6.5		9.5	5.0
	ICPH6509R22		ICPN6509R22		7.0		
	ICPH6511R22		ICPN6511R22		11.5	5.0	
	ICPH6511R26		ICPN6511R26			9.0	
	ICPH6515R26	ICPN6515R26	15.5		5.0		
	ICPH6515R30	ICPN6515R30			9.0		

* Use a 1.27 Hex driver.
* Regular is Compatible with Wide

Impression Coping Transfer

Size	Code [Hex]	Code [Non-Hex]	D	L		
Mini	ICTH4009M16	ICTN4009M16	4.0	9.5		
	ICTH4011M18	ICTN4011M18		11.5		
	ICTH4015M22	ICTN4015M22		15.5		
	Regular	ICTH4509M16	ICTN4509M16	4.5	9.5	
		ICTH4511M18	ICTN4511M18		11.5	
		ICTH4515M22	ICTN4515M22		15.5	
		Regular	ICTH4509R15	ICTN4509R15	4.5	9.5
			ICTH4511R17	ICTN4511R17		11.5
			ICTH4515R21	ICTN4515R21		15.5
Regular	ICTH5509R15		ICTN5509R15	5.5	9.5	
	ICTH5511R17		ICTN5511R17		11.5	
	ICTH5515R21		ICTN5515R21		15.5	
	Regular		ICTH6509R15	ICTN6509R15	6.5	9.5
			ICTH6511R17	ICTN6511R17		11.5
			ICTH6515R21	ICTN6515R21		15.5

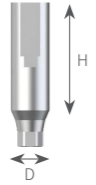
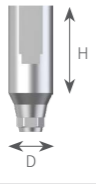
* Use a 1.27 Hex driver.
* Regular is Compatible with Wide.



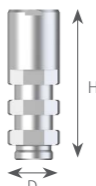
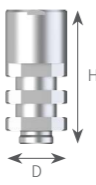
[ICTH4515R + ICT-S17TR]

Implant Consumables



Drill Sequence

Size	Size	Image	Code	D	H
Model Scanbody	Mini		MSH40M	4.0	9.0
	Regular		MSH45R	4.5	9.0

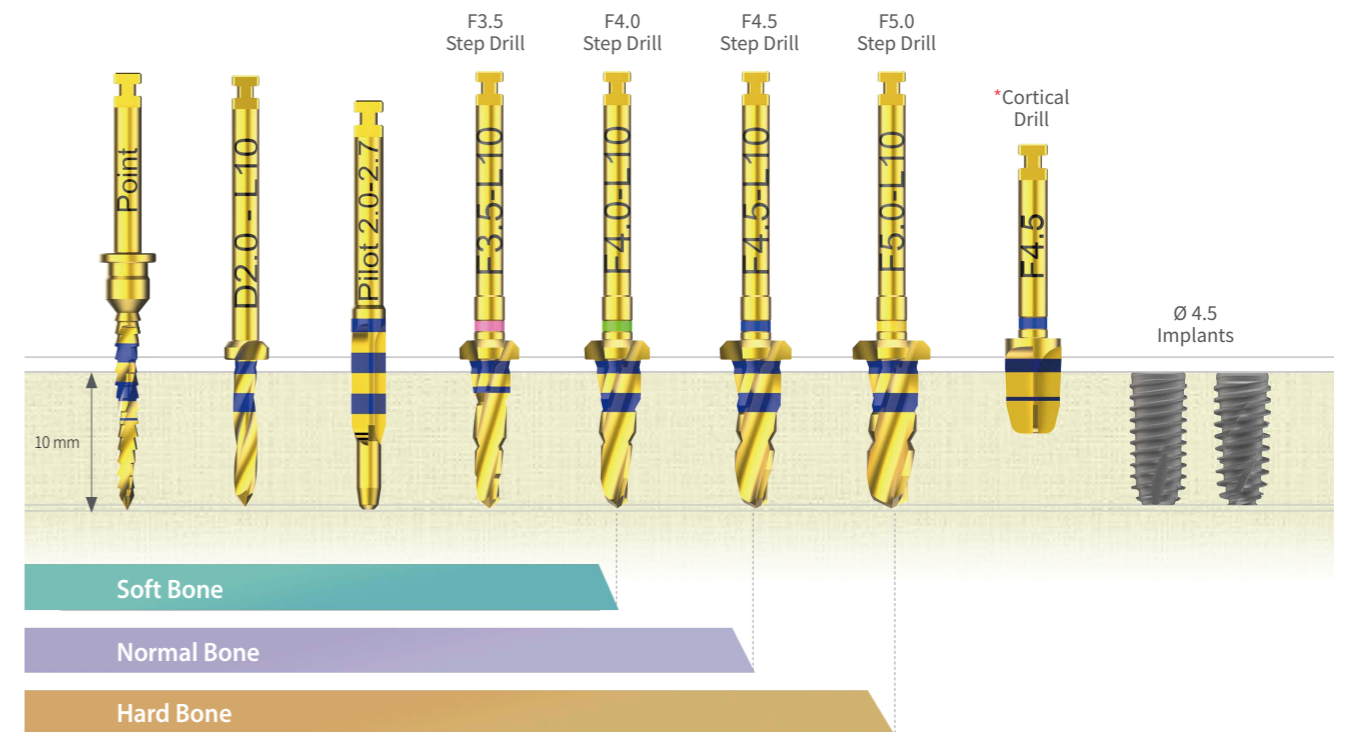
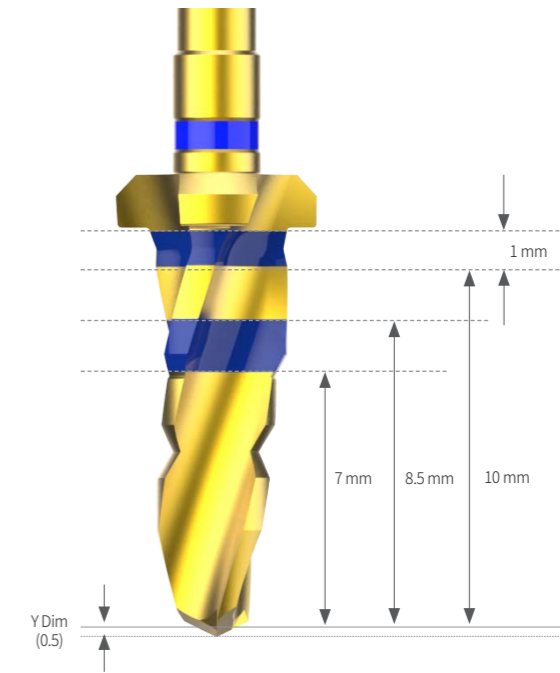
* Use a 1.27 Hex driver.
* Regular is Compatible with Wide

Size	Size	Image	Code	D	H
Lab Analog	Mini		ANH3410M	3.4	10.0
	Regular		ANH4510R	4.5	10.0

* Use a 1.27 Hex driver.
* Regular is Compatible with Wide

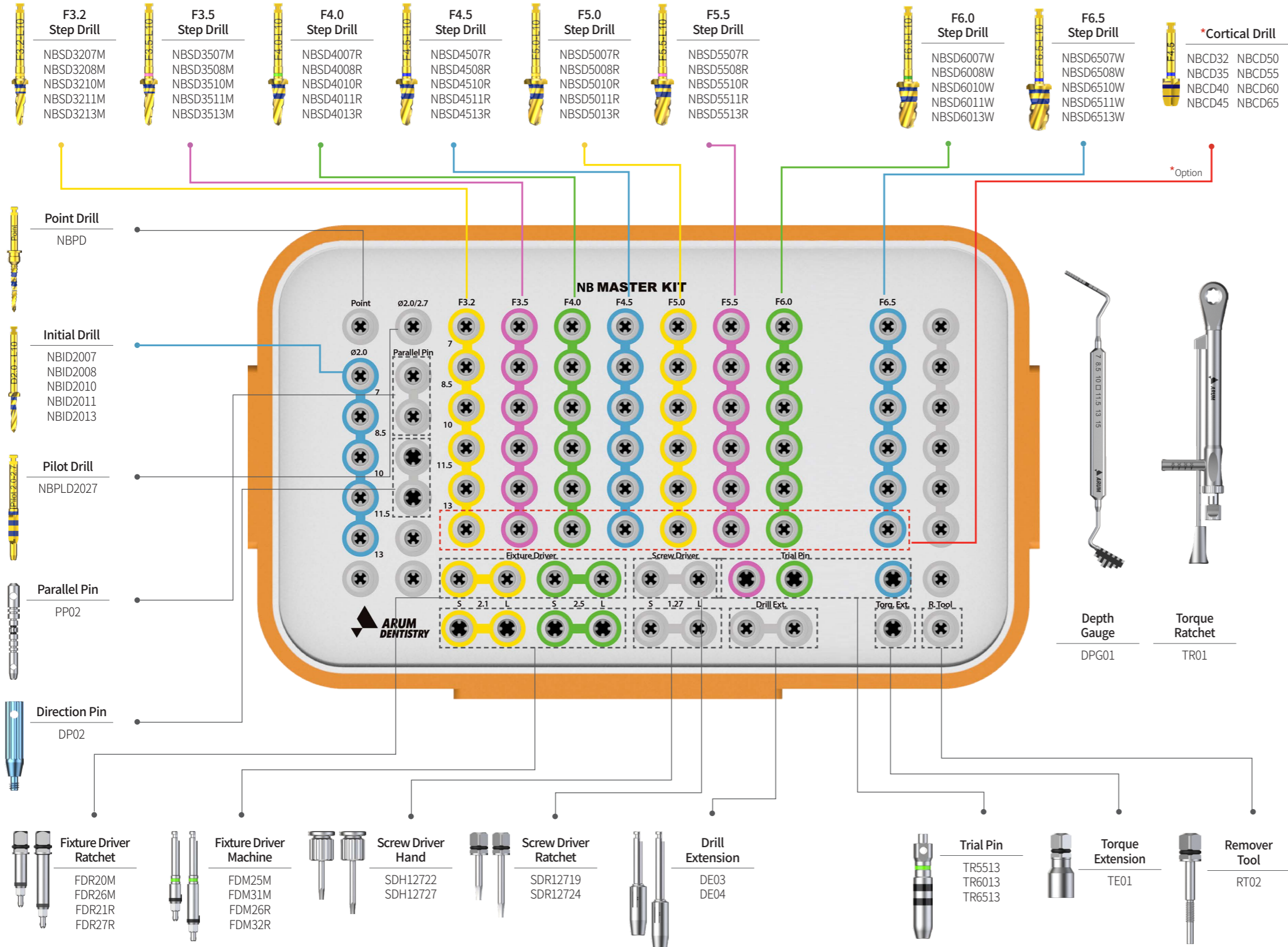
Size	Size	Image	Code
Attachment	Mini		NBATM
	Regular		NBATR

* Use a 1.27 Hex driver.
* Regular is Compatible with Wide

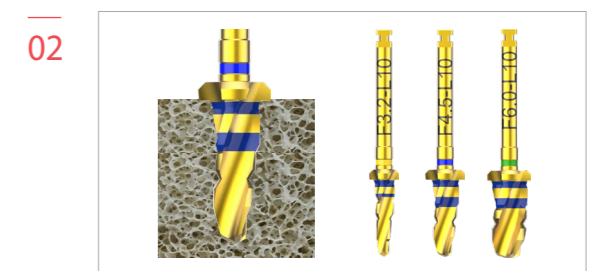


· Used to reduce applicable torque on D1,D2 Bone.
* Note that when selecting Cortical drill, the depth of drilling should be selected differently depending on the density of the bone. For example, when applying a cortical drill to D1 bone, drilling should be done until the upper line.

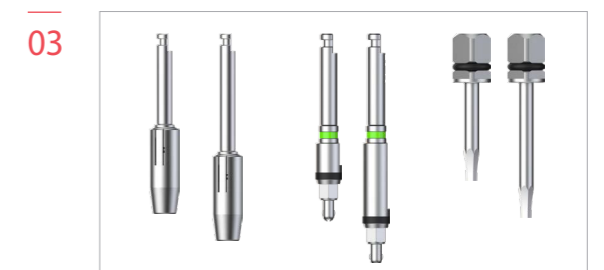
NB Master Kit



01 User-friendly Surgical Kit & Instrument



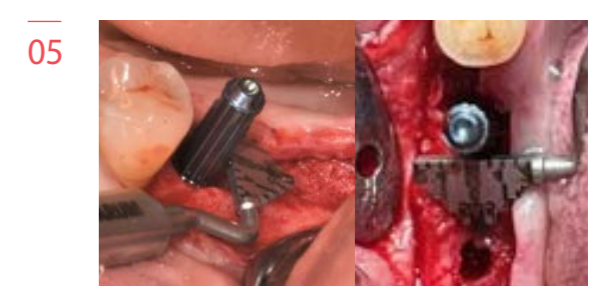
02 Stopper system by drill length



03 Basic configuration of instruments of various lengths



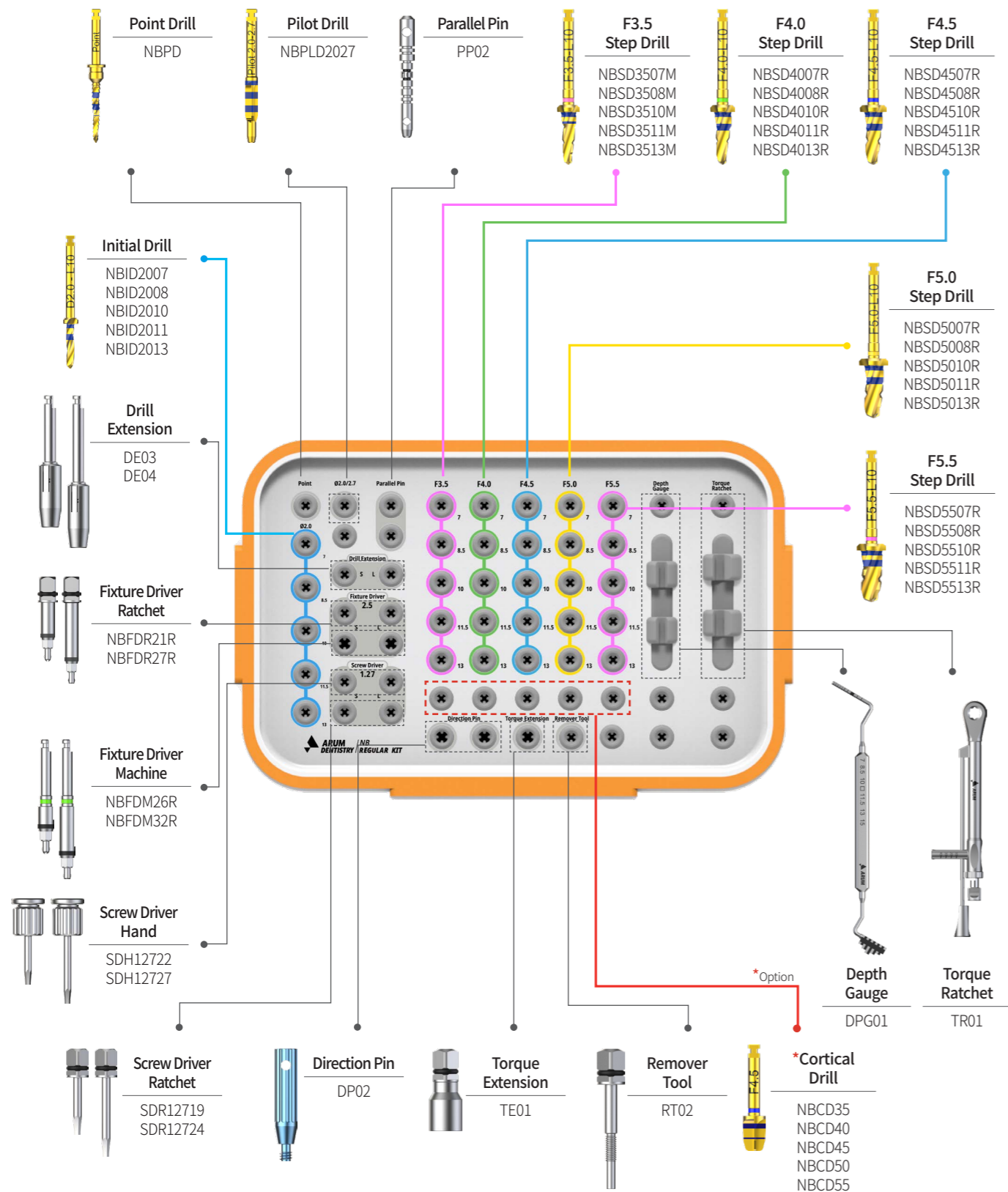
04 Easy to collect autogenous bone during drilling



05 Various Direction & Positioning Instruments for user convenience







NB Regular Kit

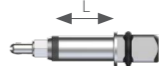

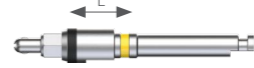
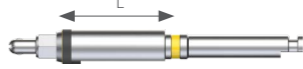
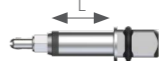
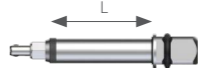
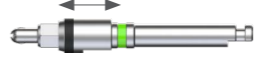
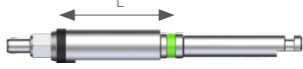
Drill

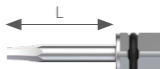





Product	Image	Code	D	L
Point Drill		NBPD	-	13.0
Initial Drill		NBID2007	2.0	7.0
		NBID2008		8.5
		NBID2010		10.0
		NBID2011		11.5
		NBID2013		13.0
Pilot Drill		NBPLD2027	2.0/2.7	13.0



Product	Size	Image	Code	D	L	
Step Drill	Mini		NBSD3207M	3.2	7.0	
			NBSD3208M		8.5	
			NBSD3210M		10.0	
			NBSD3211M		11.5	
			NBSD3213M		13.0	
				NBSD3507M	3.5	7.0
				NBSD3508M		8.5
				NBSD3510M		10.0
				NBSD3511M		11.5
				NBSD3513M		13.0

Product	Size	Image	Code	D	L		
Step Drill	Regular		NBSD4007R	4.0	7.0		
			NBSD4008R		8.5		
			NBSD4010R		10.0		
			NBSD4011R		11.5		
			NBSD4013R		13.0		
			NBSD4507R	4.5	7.0		
			NBSD4508R		8.5		
			NBSD4510R		10.0		
			NBSD4511R		11.5		
			NBSD4513R		13.0		
			NBSD5007R	5.0	7.0		
			NBSD5008R		8.5		
	NBSD5010R		10.0				
	NBSD5011R		11.5				
	NBSD5013R		13.0				
		NBSD5507R	5.5	7.0			
		NBSD5508R		8.5			
		NBSD5510R		10.0			
NBSD5511R		11.5					
NBSD5513R		13.0					
Step Drill	Wide		NBSD6007W	6.0	7.0		
			NBSD6008W		8.5		
			NBSD6010W		10.0		
			NBSD6011W		11.5		
			NBSD6013W		13.0		
			NBSD6507W	6.5	7.0		
			NBSD6508W		8.5		
			NBSD6510W		10.0		
			NBSD6511W		11.5		
			NBSD6513W		13.0		

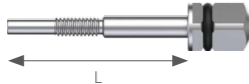
Size	Product	Image	Code	L
Mini	Fixture Driver Ratchet		FDR20M	9.0
			FDR26M	15.0
	Fixture Driver Machine		FDM25M	5.0
			FDR31M	12.0
Regular	Fixture Driver Ratchet		FDR21R	9.0
			FDR27R	15.0
	Fixture Driver Machine		FDM26R	5.0
			FDM32R	11.0

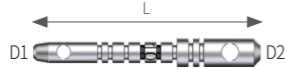
Product	Image	Code	L
Screw Drive Ratchet		SDR12719	13.0
		SDR12724	18.0
Screw Drive Hand		SDH12722	13.0
		SDH12727	18.0

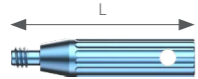
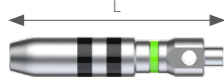
Instruments

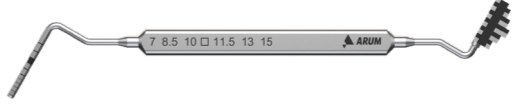
Product	Image	Code	L
Drill Extension		DE03	25.6
		DE04	29.6


Product	Image	Code	D	L
Torque Extension		TE01	6.5	16.0

Product	Image	Code	L
Remover Tool		RT02	19.0

Product	Image	Code	D1	D2	L
Parallel Pin		PP02	2.0	2.7	21.2

Product	Image	Code	D	L
Direction Pin		DP02	35	17.0
Trial Pin		TP5513	4.1	22.0
		TP6013	4.6	
		TP6513	5.1	

Product	Image	Code
Depth Gauge		DPG01

Product	Image	Code
Torque Ratchet		TR01

Oral Scanner



iTero

- 01 Maximized efficiency**
 - Scanning within 60 seconds
 - Oral health monitoring by storing the patient's scan records
- 02 Excellent accuracy**
 - Accurate marginal fit and full arch scan
- 03 Diagnostic and monitoring tools**
 - Assisting in the detection of proximal caries with NIRI technology
 - Occlusal evaluation with occlusogram function
 - Oral-health monitoring with integrated intraoral camera
 - Analysis of changes in oral health according to time lapse
- 04 AI scan support**
 - Automatic margin display
 - Automatic trimming of excess tissue
- 05 Manufacture of various prostheses**
 - Manufacture of fixed, detachable, and implant-type prostheses from single crowns to completely edentulous jaws
- 06 Effective workflow**
 - A platform allowing real-time communication with laboratories
 - Exocad* software for treatment planning and prosthesis manufacture (optional)
 - Clinic room milling workflow

Features	iTero Element 5D (Wheel stand)	iTero Element 5D (Laptop)	iTero Element 2	iTero Element Flex	iTero Element
Color scan and auto-correction function	■	■	■	■	■
Comprehensive restorative and implant treatment	■	■	■	■	■
CAD and milling for the clinic room	■	■	■	■	■
Visualization of time lapse	■	■	■	■	■
Visualization of invisalign treatment plan	■	■	■	■	■
NIRI technology	■	■			
Intraoral photography	■	■			
Next-generation computing capacity	■	■	■		
Extendable 21.5" touch wide screen	■		■		
Integrated battery for seamless scanning	■		■		
Laptop connection	■	■			
Carrying Case in custom design		■			

CAD/CAM Milling Machine



ARUM 5X-500(L)

- 24 Hour Milling
- Magazine Automatic Replacement
- Excellent Repeatability
- Wireless Calibration
- Metal Disk Milling
- Open C type Jig

Axis	5-Axis	
Processing	Wet and Dry	
Spindle Power	AC 2.2kw	
Max. RPM	60,000	
A.T.C	20	
Motor	Servo	
Drive Mechanism	Ball Screw	
Way System	Linear Guide	
Machine Size (W×D×H)	1100×910×1735 mm	
Weight	440 kg	
Travel	X,Y,Z axis	228×128×130 mm
	A / B axis	360° / ±30°

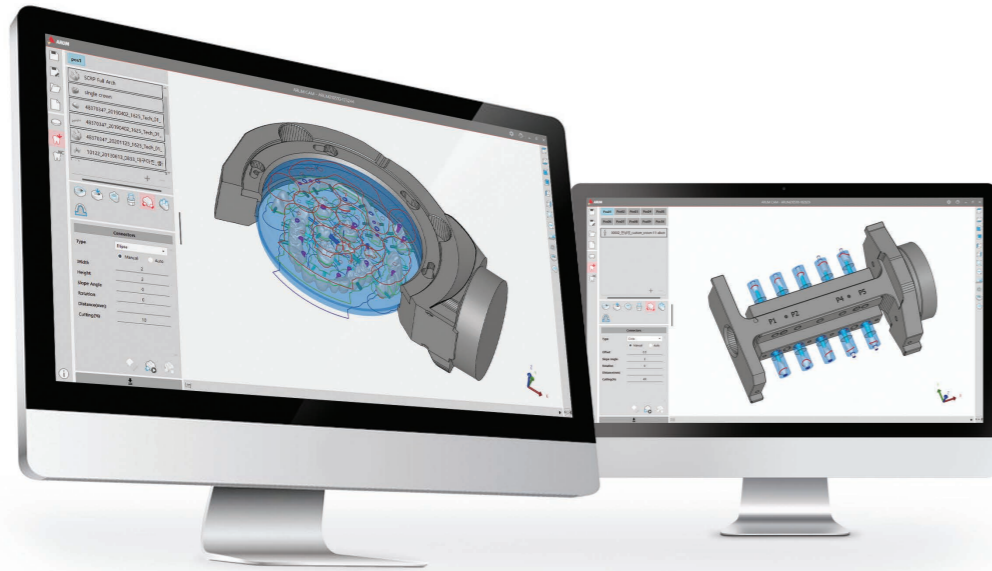


ARUM 5X-300 Pro

- ONE All In One System
- Open C type Jig
- Wireless Calibration
- CAD Block Milling

Axis	5-Axis	
Processing	Wet and Dry	
Spindle Power	AC 0.5 kw	
Max. RPM	80,000	
A.T.C	12	
Motor	Stepping	
Drive Mechanism	Ball Screw	
Way System	Linear Guide	
Machine Size (W×D×H)	570×620×1580 mm	
Weight	155 kg	
Travel	X,Y,Z axis	159×120×90 mm
	A / B axis	± 30° / 360°

CAM Software



ApexMill

The Easy, The Fast, The Accurate

ApexMill is software in which all the machining know-hows of ARUM DENTISTRY are integrated. It is, above all, optimized for ARUM Milling Machine, and guarantees excellent machining quality. It provides a UI/UX environment that is easy for everyone to understand and all the core functions necessary for dental part machining. Now you can experience the most practical and most powerful CAM Design developed by ARUM DENTISTRY.

Function	Description
Implant library machining	A function to easily machine the abutment implant interface with a variety of predefined libraries
Angled screw channel machining	A function to adjust the interface angle and machine angled screw channel
Screw channel machining	A function to paper the screw channel's inner shape / automatically analyze and machine End Type
Grinding machining module	Grinding optimized for lithium disilicate (glass ceramic)
Basic shape recognition	A function of automatic/manual recognition while working on margins and holes even without CAD information
Advanced shape recognition	Differentiated part recognition and modification
Workflow and UI	Practical and intuitive user interface and experience
Material information setting	A function to register and modify materials and to modify basic information modification of each material
Sinter frame creation	A function to create a variety of sinter frames
Toolpath master module	A function to create and modify strategies, define customized machining method and modify machining tool
Automatic placement	A function to set whether (or not) to use automatic part placement function and specify the degree of overlap.
User-defined area designation	A function to designate and machine a specific area of the prosthesis
Automatic connector	A function to automatically place connectors on part
C-type jig machining	A function to machine thin and long anterior teeth even with thin materials
Machine connection	A function to print out NC output file path as a network folder so that it can used directly on the machine
Circular material machining	A function to machine the blank of circular material
Block material machining	A function to machine ceramic block material such as lithium disilicate (glass ceramic)
Pre-milled blank material machining	A function to machine the round bar material for abutment
Undercut indication	A function to analyze the undercut for entire part appearance and analyze tooth's inner undercut individually
Simulation history	A function to save and check the recently created list of NC simulation information

Zirconia Block



ARENA

Play Aesthetic Athletics

- Made with 100% TOSOH Powder that has been confirmed to have superior quality
- Produced by automatic press equipment exclusively for multi product which makes it maintain high quality
- Excellent Enamel layer expression and natural transparency
- Outstanding suitability based on the superior manufacturing block technology
- Create Natural gradation with five layers
- Easy and simple coloring

	ARENA		ARENA Star ^o	
	ARENA Multi-layered	ARENA Pre-shade	ARENA Star Multi-layered	ARENA Star Pre-shade
Type	ARENA Multi-layered	ARENA Pre-shade	ARENA Star Multi-layered	ARENA Star Pre-shade
Shade	A1/A2/A3/A3.5	A0/A1/A2/A3/A3.5/A4/B1/B2/B3/B4/C1/C2/C3/D2/D3	A1/A2/A3/A3.5	A0/A1/A2/A3/A3.5
Strength (MPa)	600 ~ 800	1,100	600 ~ 1,100	1,100
Thickness (mm)	12/14/16/18 20/22/25	10/12/14/16/18 20/22/25/30	12/14/16/18 20/22/25	10/12/14/16/18 20/22/25/30
Diameter (Ø)	98	98	98	98



[ARUM Colouring Liquid A to Z]



[ARENA Star A2, A3, A3.5 Colouring Technique with Zirconia A2 Block]



[ARENA Star A2, A3, A3.5 Colouring Technique with Zirconia A3 Block]




[How to make A2, A3, A3.5 Shade Using One block]




Excellent
Biocompatibility


Natural Tooth
Similarity


Economical


Open Resin
System


Low Viscosity

Product	Indication	Features of Product	Volume
C&B 5.0 Hybrid	Temporary	A material used to make a temporary prosthesis, which replaces a natural tooth during a prosthetic treatment and procedure.	1kg, 500g
SG 5.0 (Surgical Guide)	Implant Surgical Guide	A material used to guide the location, direction, and depth of dental implant procedures	
Denture Plus ARUM 5.0	Denture	A material that creates a denture base through photopolymerization	
ARUM MODEL / MODEL ARUM 5.1	Model	A material used to make an oral model for an accurate prosthesis	

ARUM LCD 3D Printer



- Resin tank change is easy
- Simultaneous control of Four 3D Printers
- Easy and quick LCD panel replacement
- Resin mixing function

UV Vacuum Curing Machine



- Uniform and stable light irradiation in all directions with rotary turntable UV LAMP
- Curing time that can be customized every minute
- Surface gloss, internal strength, and short curing time
- Prevents distortion of output with the Chamber warm-up system



ARUM DENTISTRY Co., Ltd.

23, Gukjegwahak 11-ro, Yuseong-gu, Daejeon, 34002, Republic of Korea
Tel +82 42 935 3644 | Fax +82 42 935 3645 | www.arumdentistry.com
Contact implant@arumdentistry.com



Ver. 2023-FEB-En